

St Columba's

Church of Scotland

A home away from home

**FRIENDS OF
ST COLUMBA'S
PROGRAMME OF
EVENTS**

(web page:

www.stcolumbas.org.uk/friends-of-st-columbas)

August 2024-5

**By popular demand, we revisit the BBC, (Portland Place and White City)
led by Hugh Pym - at Broadcasting House, Portland Place, London W1A
1AA (tube: Oxford Circus)**

Saturday September 28, 2024 at 11 a.m.

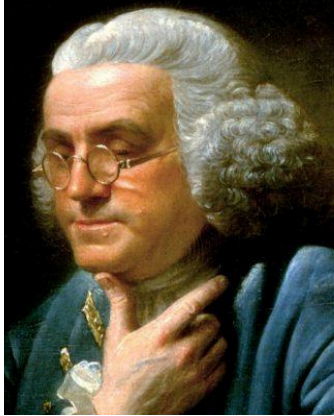
Rendezvous: in Café Nero, Langham Place.



Lunch, suitably, at “The Broadcaster” gastropub in White City. Visit of former BBC Television Centre, then the nearby site of the Olympic Games of 1908., with the finishing line.

As only 10 visitors are allowed per visit, this is reserved for Members of the Friends. If you wish to go, please e-mail your name to Isobel Carter (isobel@in-carter.com) by Sunday 15 September at the latest.

Saturday November 21, 2024 at 11a.m. Benjamin Franklin House, 39 Craven Street WC2 5NF (Embankment Tube) Rendezvous just inside main entrance



Scientist, diplomat, inventor, postal pioneer, Founding Father, Franklin lived in this elegant Georgian townhouse between 1757 and 1775. Although his primary reason for being in London was to mediate between Britain and the increasingly fractious American colonies, Franklin still found time to invent bifocal spectacles and the glass armonica, reform the alphabet and hobnob with the leading figures of the day.

Cost: Under 12s Free, Adults £12, Concessions (over 65)– £10



On 17 January, 1706: Franklin was born in Boston MA. He was selected councilman in Philadelphia in 1748 then was appointed **president of Philadelphia Academy. which later became the University of Pennsylvania.** In **1751 he** received an honorary doctorate from the University of St. Andrews, Scotland, **He moved to London in 1764 to represent colonial interests before the Crown,** His scientific work did not cease: he experimented with canal depths, invented the glass armonica, devised a new alphabet, and a Long Arm to take books down from high shelves. In **1776 he signed the Declaration of Independence** and sailed to France as American Commissioner. Feted throughout Paris, he negotiated and signed the **US Treaty of Alliance with France (1778).** Returning to Philadelphia in 1785, he was elected **President of the Pennsylvania Society for Promoting the Abolition of Slavery-(1787).** He died on the 17th of April 1790 in Philadelphia aged 84.

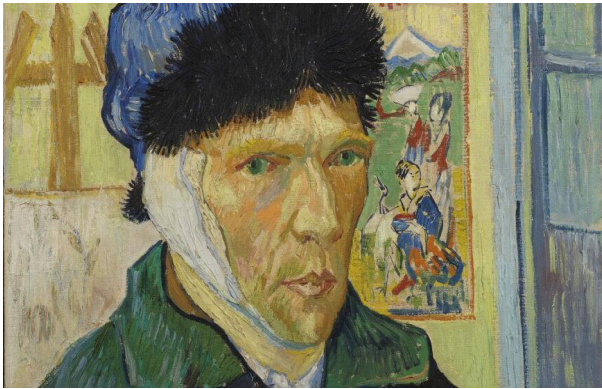
Saturday February 8, 2025 at 11 a.m. Courtauld Gallery, Somerset House, Strand, London WC2R 0RN. (Tube: Temple, Charing Cross, Embankment) Rendezvous inside the main entrance door.

Here we will see world class art with the feel of a private gallery: some of the finest 18th century interiors in London, an excellent cadre for treasures of European art from the Renaissance onwards, outstanding collections of Impressionist and Post- Impressionist work, The second floor galleries are given over to the twentieth century.

Gallery Entry tickets £10.

Gallery Entry + Exhibition tickets £13.

Friends and Art Fund goad free. Other concessions available. Timed entry slots only: please let us know in advance whether you would like to attend



Manet: A Bar at The Folies Bergeres

Van Gogh: Self-Portrait with a bandaged ear

The gallery is renowned for its remarkable group of Impressionist and Post-Impressionist paintings, including the world-famous *A Bar at the Folies Bergère* by Édouard

Manet, *Self-Portrait with Bandaged Ear* by Vincent van Gogh and the most significant collection of Cézanne in the UK. These masterpieces are presented in The Courtauld Gallery's spectacular LVMH Great Room, one of the largest spaces in Somerset House, alongside works by artists including Degas, Gauguin, Monet, Renoir, Seurat and more.

The Blavatnik Fine Rooms, spanning the Piano Nobile across the whole of the second floor, provide the stunning setting for displaying works from the Renaissance to the 18th century. Highlights include *Adam and Eve* by Lucas Cranach the Elder, *The Family of Jan Bruegel the Elder* and *The Descent From The Cross* by Peter Paul Rubens, *The Trinity with Saints* altarpiece by Sandro Botticelli, and *Landscape with a flight into Egypt* by Pieter Bruegel the Elder.

The Ruddock Family Gallery is dedicated to The Courtauld's important collection of Medieval and Early Renaissance paintings and decorative arts. Rooms devoted to 20th century art and the Bloomsbury Group also showcase lesser-known areas of the collection through rotating displays.

Saturday March 15, 2025 at 11 a.m. The Wellcome Collection, 383 Euston Road, London NW1 2BE. (Tube: Euston Square, Euston, Warren St., St Pancras King's Cross) Rendezvous inside the Main Entrance.

“A free museum and library and human experience”

This is based around medical curios collected by the globe-trotting 19th century pharmacist Sir Henry Wellcome. His fascinating and often macabre finds include used guillotine blades, Napoleon's toothbrush and a Chinese torture chair. Modern medical matters are examined, often with the help of attention-absorbing contemporary art. Downstairs is a bookshop, a café and a space for excellent temporary exhibitions, Themes such as recreational drugs and human sexuality are entertainingly explored with associated special events that include lectures, operettas, gigs and experiments. The museum has proved so popular that it is expanding to include more space, plus a new restaurant. At every turn the visitor will find something to fascinate.

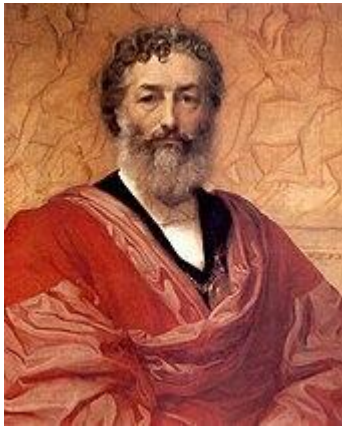
This permanent gallery explores trust, identity and health in a changing world. “Being Human” explores what it means to be human in the 21st century. It reflects our hopes and fears about new forms of medical knowledge, and our changing relationships with ourselves, each other and the world. Featuring 50 artworks and objects, the gallery is divided into four sections: Genetics, Minds & Bodies, Infection, and Environmental Breakdown. Discover a refugee astronaut carrying their belongings to an unknown destination, sniff a perfumed bronze sculpture that smells of breast milk and listen to an epidemic jukebox.



As concern about climate change rightfully crescendos, it is hard to see Yinka Shonibare's 'Refugee Astronaut' as anything other than some sort of dire omen from an environmentally catastrophic future. The life-size figure is the flagship exhibit in Wellcome's new permanent gallery 'Being Human' – is clad in moon boots, a spherical helmet and a spacesuit. The surrounding air seems to be too poisonous to inhale: the astronaut clutches a pair of breathing tubes attached to a tank on his or her back. Clearly, the traveller has upped sticks in a hurry: a tangle of possessions is hauled around in a ramshackle net “It's in one sense a warning” says Shonibare. “It's

trying to imagine what could happen if we don't do something about rising water levels and the displacement of people.”

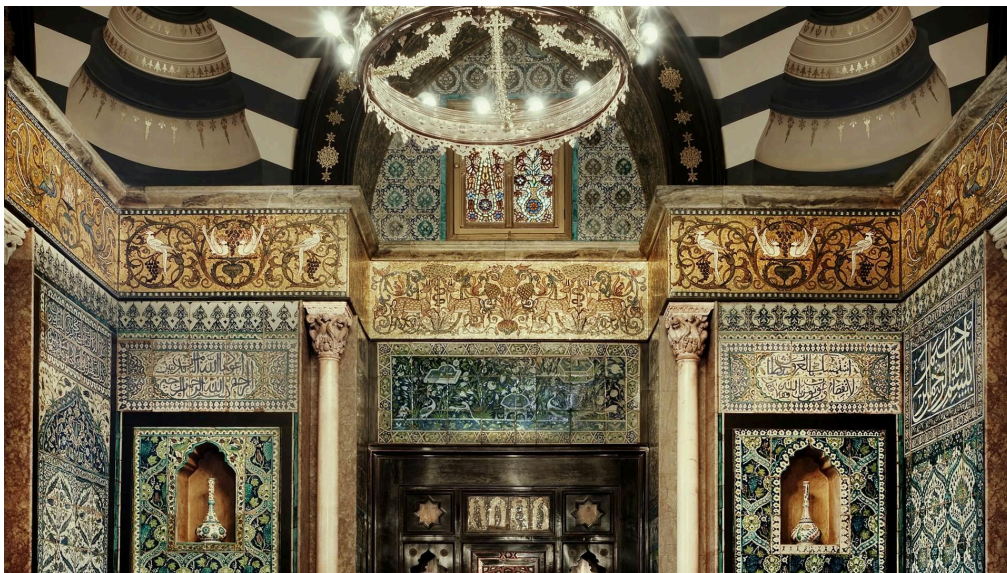
Saturday May 10, 2025, 11 a.m., Leighton House, 12 Holland Park Road, W14 (High St Ken Tube) Rendezvous inside the main entrance.



Lord Leighton



The Arab Hall



The summer weather will hopefully make our visit to Leighton House all the more attractive. Surrounded by its own large garden, this evocative haute-bohemian pad was once home to Frederic, Lord Leighton, the great classical painter of the Victorian age. Hung with paintings by the man himself and his pre-Raphaelite pals Millais and Burne-Jones, and with ceramics by William de Morgan, the house was designed as a palace devoted to art, and its opulent interiors are spellbinding. The domed Arab Hall is the centrepiece: a Moorish fantasia complete with a full mosaic frieze, antique Iznik tiles and gently playing fountain. The house has recently had award-winning refurbishment and restoration that has returned Lord Leighton's interiors to their polychrome 19th century glory.

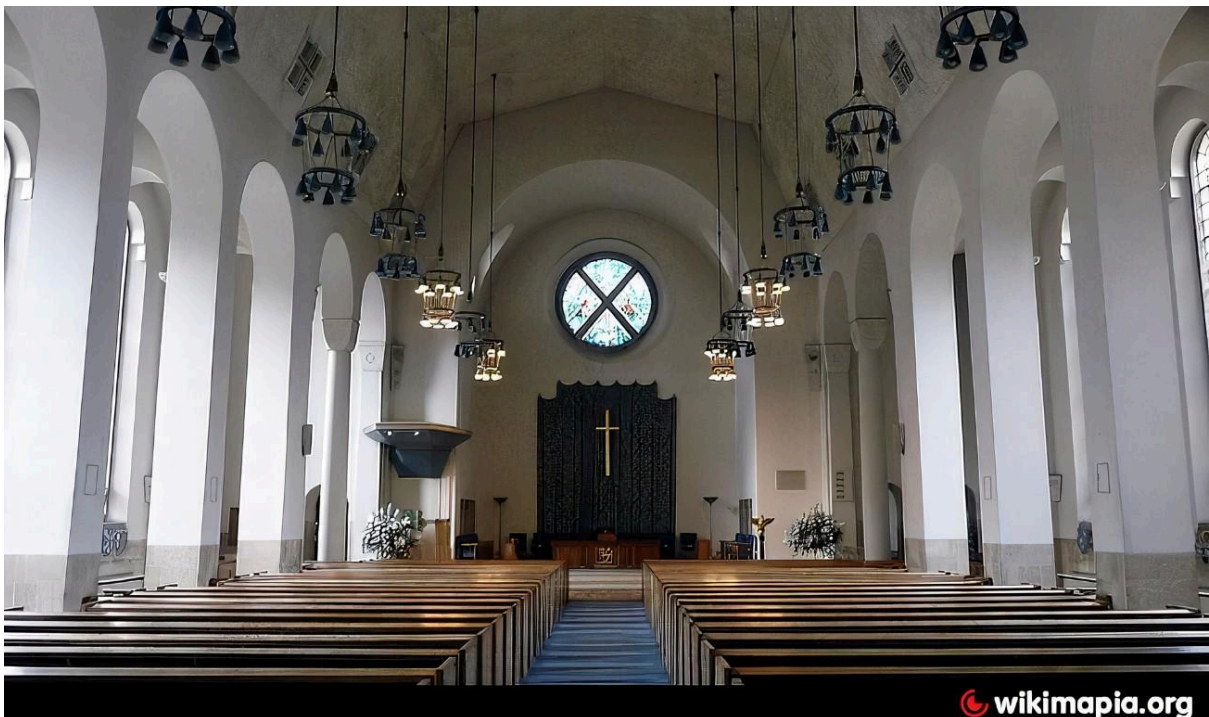
Sunday, June 8, 2025: The Celebration of St Columba's Day

Communion in Church: AGM and Celebration Tea, Upper Hall

AGM: PROPOSED AGENDA

- 1) Review of Membership
- 2) Honorary Treasurer and Secretary's Reports
- 3) Potential Uses and Sources of Funds (Memberships, Subscriptions, Donations; (The Secretary would be glad of you views here isobel@in-carter.com)
- 4) Programme of Events 2025-6 (again, suggestions welcome)
- 5) AOB

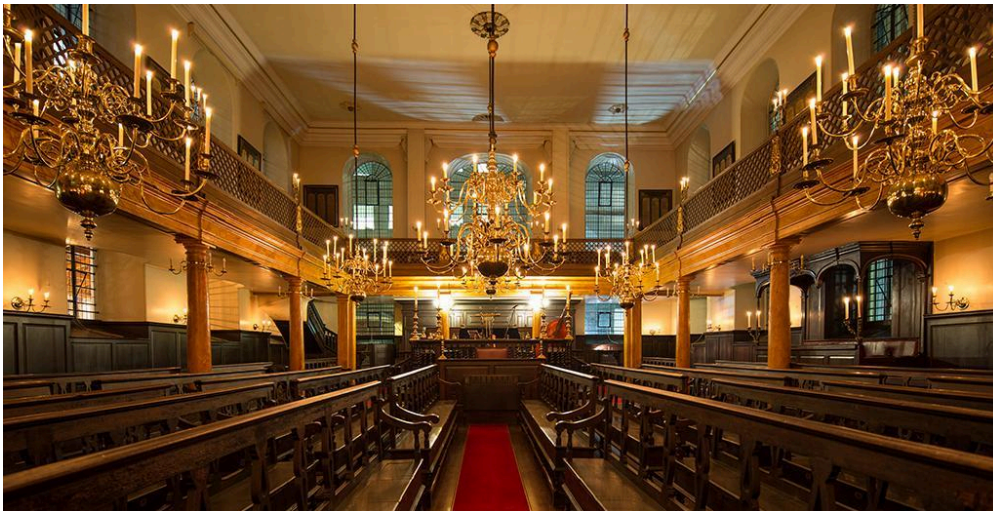
This will be followed by our traditional Celebration Tea, which gives us the opportunity to mix and mingle with other Friends and catch up with those we have not seen for some time.



Saturday June 21 2025: The Sephardic Synagogue at Bevis Marks, City of London, EC3A 5DQ (tubes: Aldgate, Aldgate East; Liverpool Street). Free.

Rendezvous by the Main Entrance.

We hope to make the visit planned for June 2024 to the Sephardic Synagogue at Bevis Marks in the City of London. This is the oldest continuously functioning synagogue in Europe at 320 years. It is the Cathedral Synagogue of British Jewry. A large programme of reconstruction prevented our 2024 visit – we hope we shall have better luck this year.



The S&P Sephardi Community – originally known as The Spanish and Portuguese Jews' Congregation of London – was founded in 1657 as a consequence of the famous petition to Cromwell in 1656. Rabbi Menasseh ben Israel from Amsterdam and six Jews living in London (ostensibly as Catholics) sought permission from the Lord Protector to worship freely and acquire land for a cemetery. In response they received a verbal guarantee and Jews were able to profess their faith openly for the first time since their expulsion by Edward 1 in 1290. The first Synagogue, in a rented building in Creechurch Lane in the City of London was replaced half a century later by the fine Synagogue of Bevis Marks nearby (opened in 1701 and still in regular use). The congregation began to grow steadily with 400 souls recorded in the 1680s.